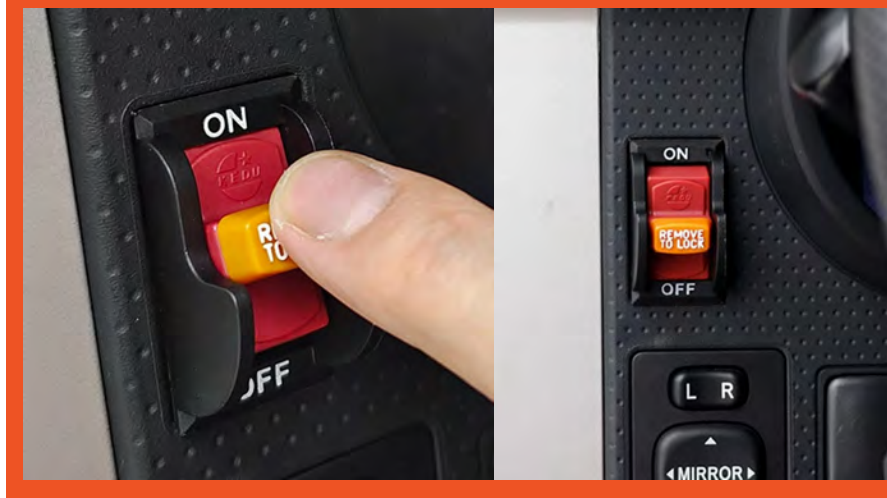




FJ CRUISER OFF ROAD SWITCH

Product Features

1. Completely turn off Electronic Stability Program
2. Turn off ABS/EBD, ASC, and ATC



Installation

1. Remove the door sill trim on the FJ
2. Remove the front panel plastic to uncover wiring. Located by the brake pedal.
 - A. This will reveal the wiring (shown in steps 3 & 4) behind this panel.
3. Unplug the power and connect the long (Fig 1) wire.
 - A. Channel switch wire to FJ switch port you want the button to be in.
4. Connect the short (Fig 2) wire to the plug (in the blue housing).
 - A. Plug back into housing.
5. Turn on vehicle and ensure switch is working properly.

